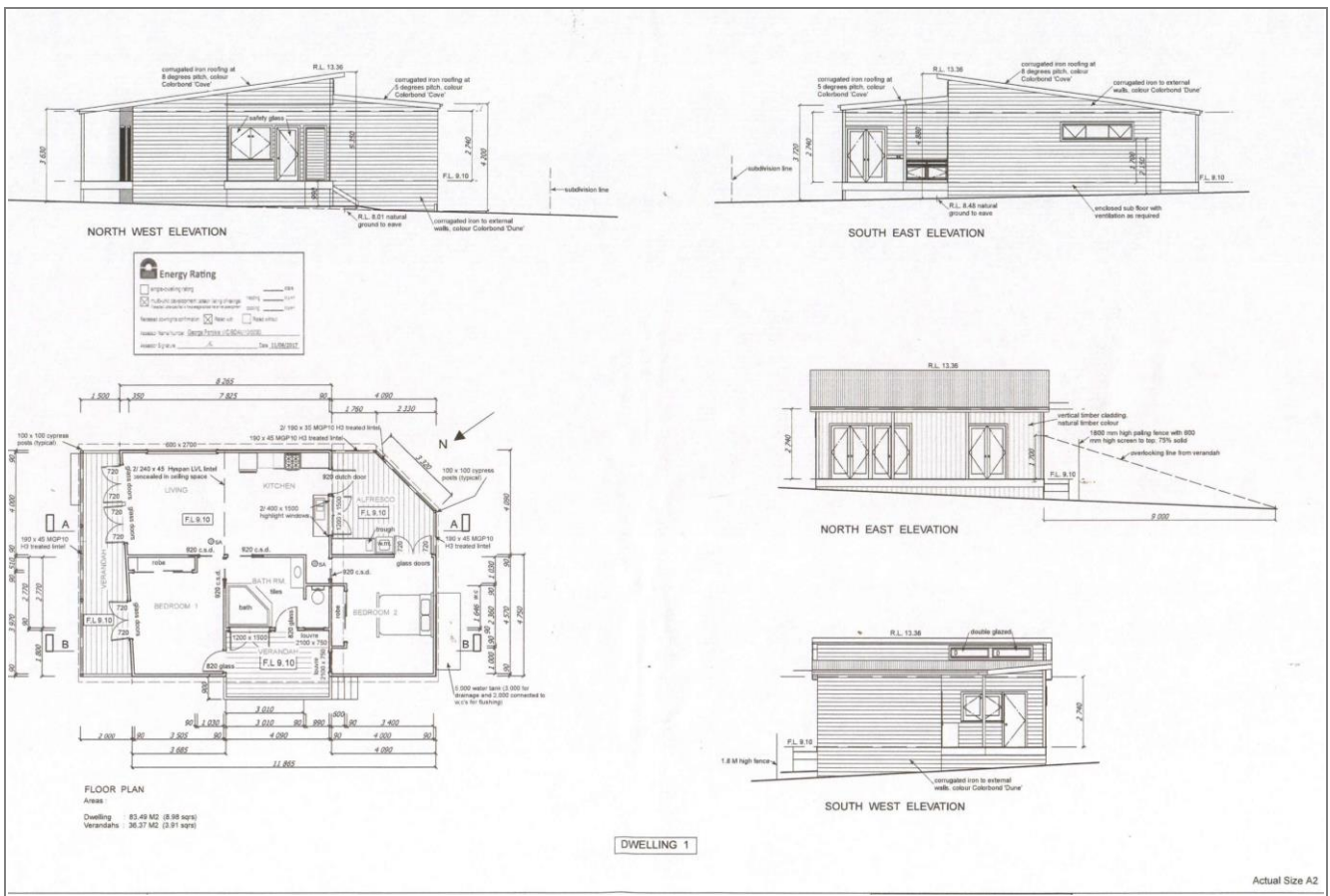


Summary of Wall Areas and Lengths

Total Area (m <sup>2</sup> )	270.92
No. of Walls	14
Wall Top (m)	133.23
Wall Bottom (m)	114.81
Wall Corner (m)	64.61

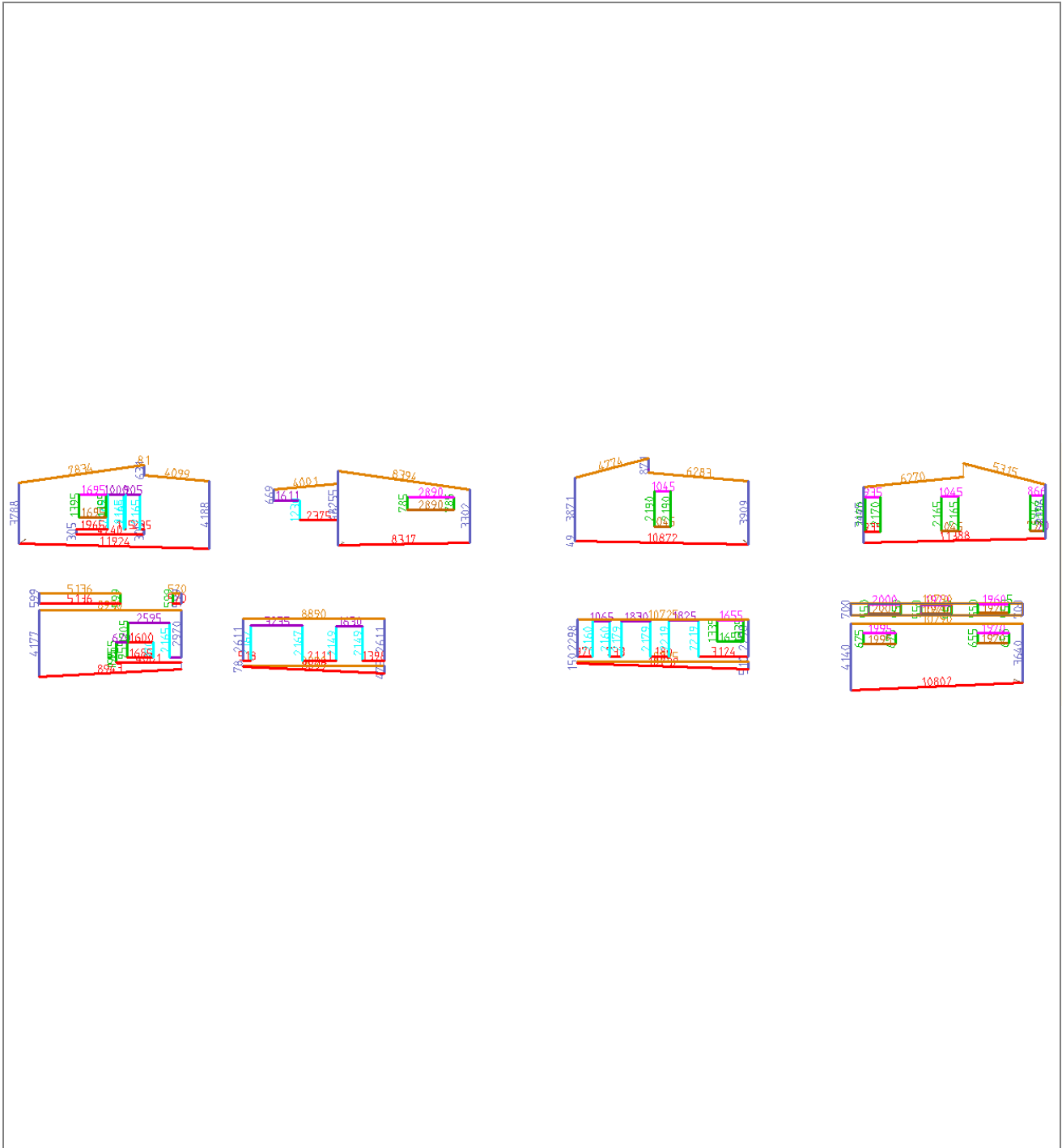
Door Head (m)	16.37
Door Edge (m)	34.77
Window Head (m)	21.94
Window Edge (m)	37.78
Window Sill (m)	19.27

Elevations

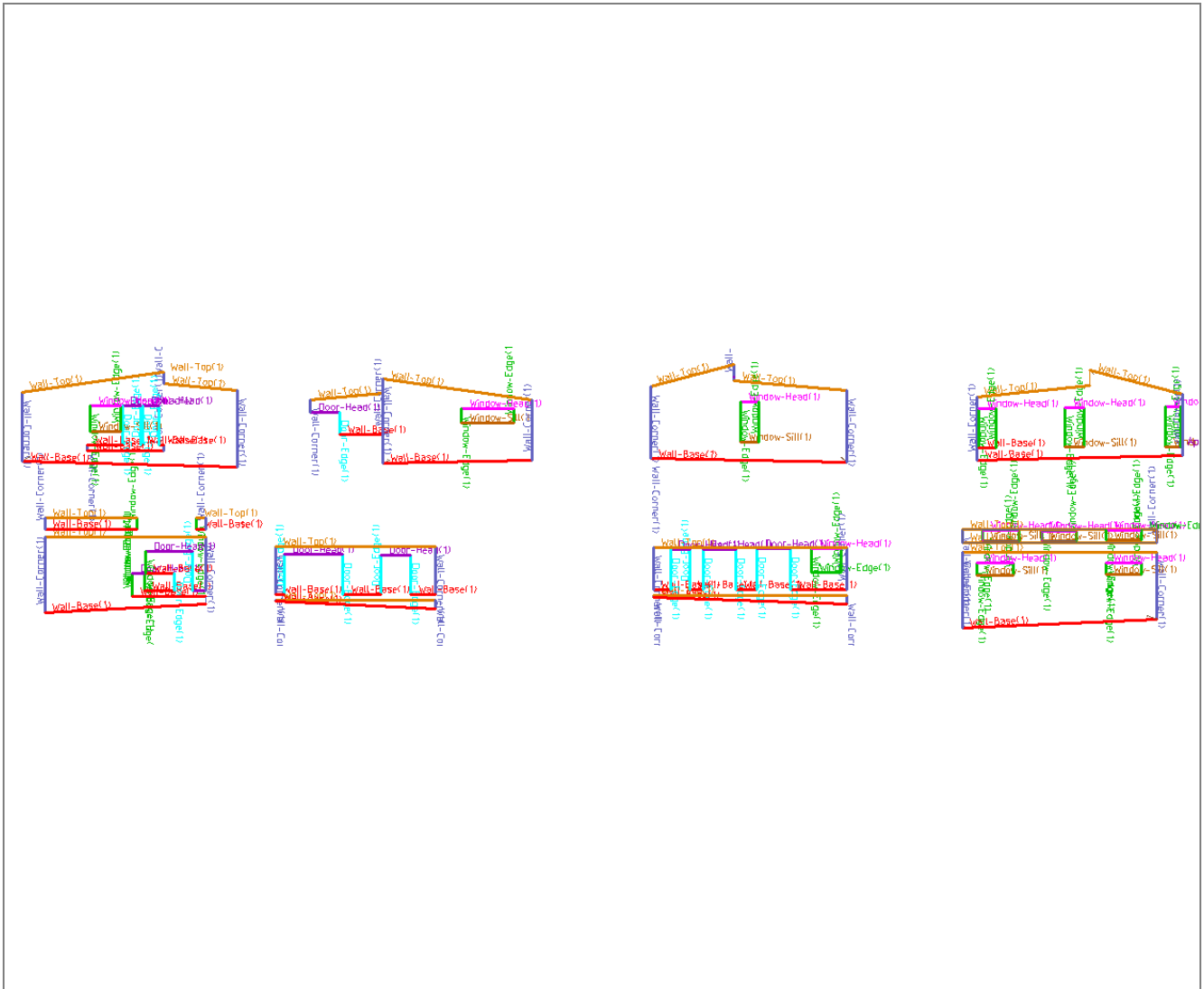




Dimension Diagram



Length Diagram



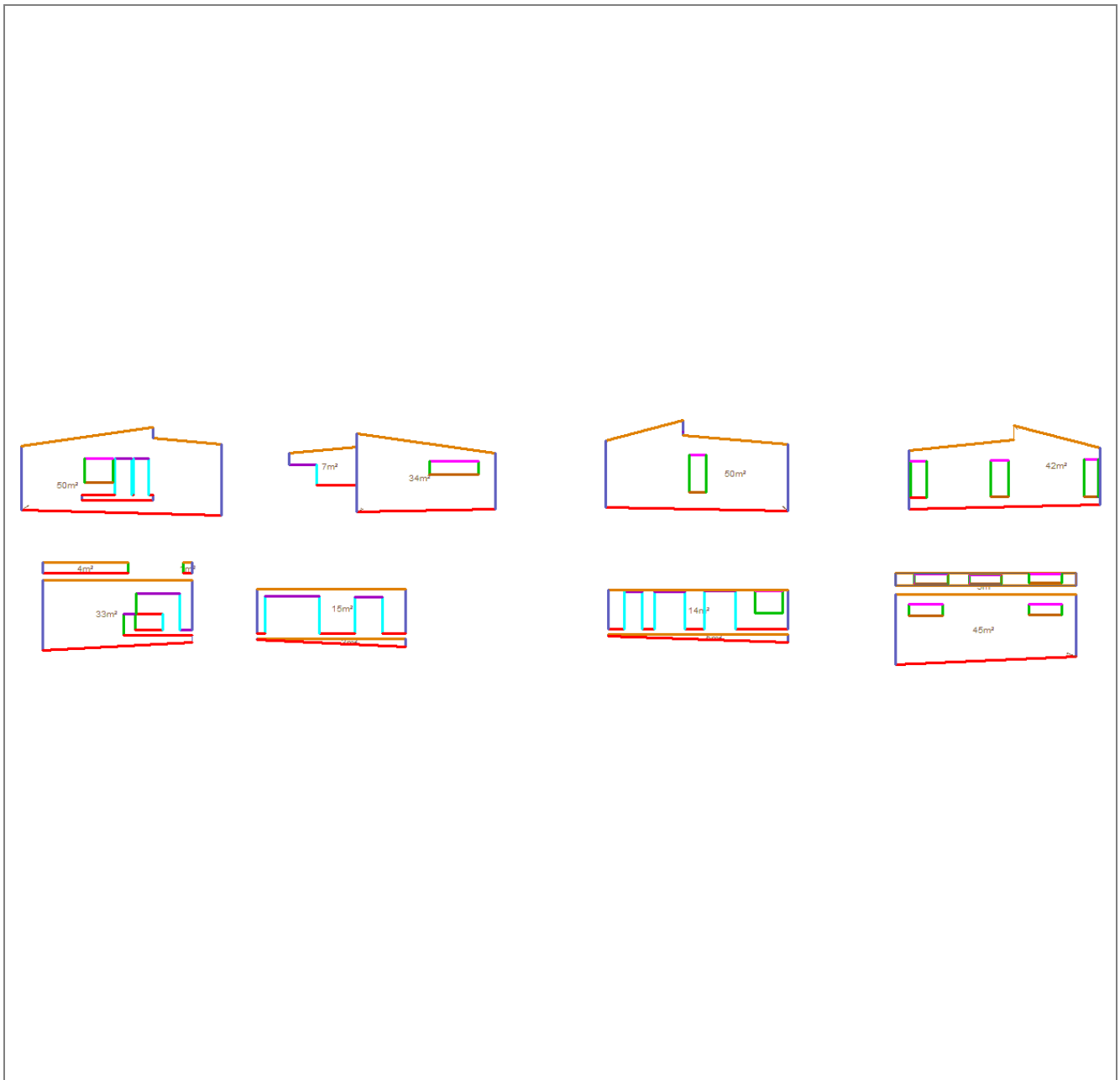
Total Line Lengths:

Wall Base = 114.81 m  
 Wall Top = 133.23 m  
 Wall Corners = 64.61 m

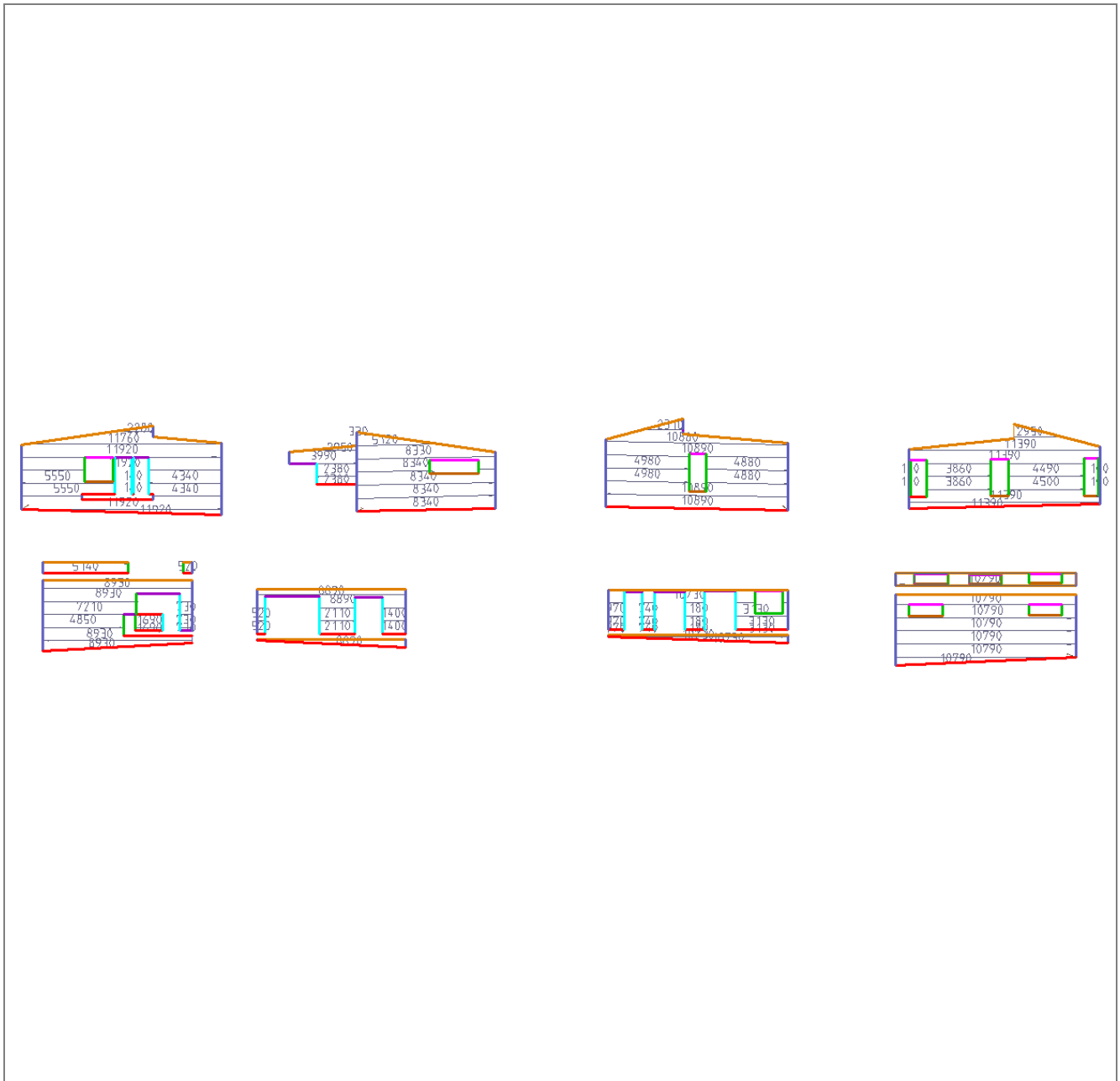
Window Head = 21.94 m  
 Window Sill = 19.27 m  
 Window Edge = 37.78 m

Door Head = 16.37 m  
 Door Edge = 34.77 m

Area Diagram



Panel Layout Diagram



Flashing Layout Diagram



## Panel & Flashing Cutting Lists

Category	Item Description	Qty
<b>Straight</b>	Corrugated, Zinc	374.42 sqm
	4/11920, 1/11760, 4/11390, 3/10890, 1/10880, 7/10790, 3/10730, 4/8930, 3/8890, 4/8340, 1/8330, 1/7210, 2/5550, 1/5140, 1/5120, 2/4980, 2/4880, 1/4850, 1/4500, 1/4490, 2/4340, 1/3990, 2/3860, 3/3130, 2/2950, 1/2590, 2/2380, 1/2310, 1/2280, 2/2110, 2/1690, 2/1400, 3/1180, 3/970, 3/740, 3/730.	491.36 m
<b>External Wall-Corner</b>	Wall Corner External,	72.90
	1/5000, 3/4500, 1/4300, 1/4200, 1/4100, 1/4000, 1/3800, 1/3700, 1/3600, 1/3300, 2/3000, 3/2600, 1/1200, 4/1000, 3/900, 1/800, 1/500, 1/400.	
<b>Window-Sill</b>	Window Sill, TBA	22.90
	1/3200, 6/2300, 1/2000, 2/1400, 1/1100.	
<b>Window-Edge</b>	Window Edge, TBA	50.30
	8/2500, 1/2000, 4/1700, 1/1500, 2/1300, 2/1100, 4/1000, 10/900, 2/500, 4/300.	
<b>Window-Head</b>	Window Head, TBA	26.30
	1/3200, 6/2300, 2/2000, 2/1400, 1/1300, 1/1200.	
<b>Door-Edge</b>	Door Edge,	40.60
	2/2600, 13/2500, 1/1600, 1/1300.	
<b>Door-Head</b>	Door Head,	19.80
	1/3600, 1/2900, 2/2200, 2/2000, 1/1400, 1/1300, 1/1200, 1/1000.	
<b>Wall-Top</b>	Wall Top, TBA	133.90
	1/9000, 2/8900, 1/8400, 1/7900, 2/6300, 11/5400, 1/5200, 1/4800, 1/4100, 1/4000, 1/600, 1/100.	
<b>Wall-Base</b>	Wall Base, TBA	116.10
	1/9000, 1/8900, 1/8400, 2/6000, 2/5700, 2/5500, 4/5400, 1/5200, 1/4300, 1/4100, 1/3200, 1/2400, 1/2200, 1/2000, 1/1700, 1/1600, 1/1400, 1/1200, 2/1000, 1/800, 2/600, 1/300, 1/200.	



### Flashing Totals

Item Description	Qty
Corrugated,Zinc,0.60	374.42
Wall Corner External,	72.90
Window Sill,TBA	22.90
Window Edge,TBA	50.30
Window Head,TBA	26.30
Door Edge,	40.60
Door Head,	19.80
Wall Top,TBA	133.90
Wall Base,TBA	116.10